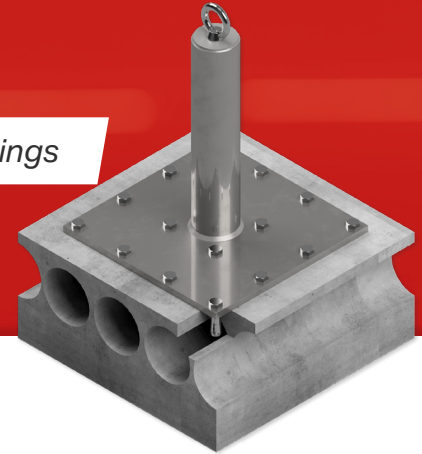


Primo 60 SP-HO

Rope access technology for prestressed concrete hollow ceilings



Technical specifications	
Material	stainless steel (V2A)
Number of users as anchor point	max. 3 persons
Number of users as Rope access technology	max. 1 person
Concrete strength	min. C45 / 55
Web thickness	min. 40 mm
Drill hole depth	65 mm
Drill hole diameter	Ø 16 mm
Hollow ceiling anchor	FHY M10 R
Installation	wall, ceiling, overhead

Version	Art.-Nr.	Height
Primo 60 SP-HO/20	6014200	200 mm
Primo 60 SP-HO/30	6014300	300 mm
Primo 60 SP-HO/40	6014400	400 mm
Primo 60 SP-HO/50	6014500	500 mm
Primo 60 SP-HO/60	6014600	600 mm
Primo 60 SP-HO/70	6014700	700 mm
Primo 60 SP-HO/80	6014800	800 mm