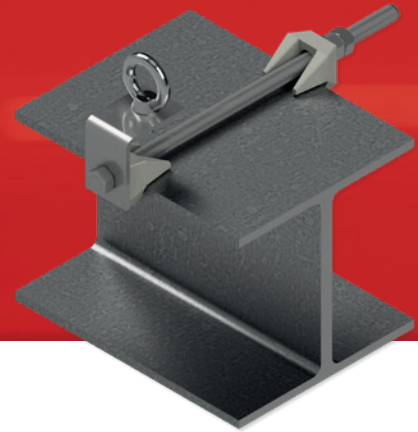


Primo 15 ST

Anchor point for steel surfaces



DIN EN
795



Technical specifications	
Material	Stainless steel (V2A)
Material of the beam clamps	Hot-dip galvanised steel
Number of users	max. 2 persons
Steel strength	min. S235
Beam width	80 - 320 mm
Fastener	Steel clamp

Version	Art. no.	Flange thickness	Application
Primo 15 ST/16	150000	8- 16 mm	Single anchor point
Primo 15 ST/25	150001	15 - 25 mm	Single anchor point
Primo 15 ST/16C	150002	8- 16 mm	Lifeline system type C
Primo 15 ST/25C	150003	15 - 25 mm	Lifeline system type C