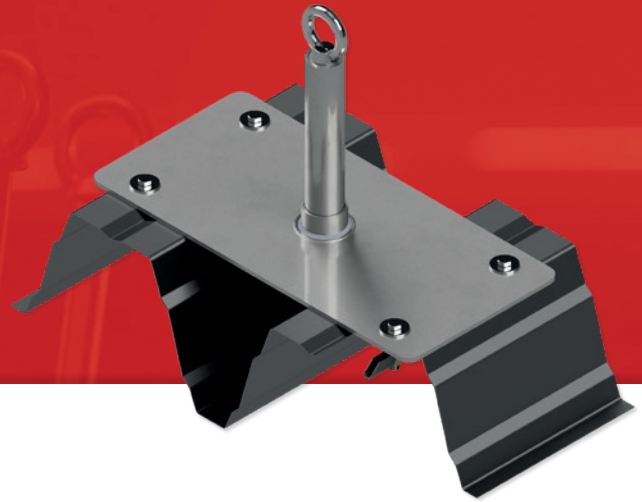


Primo 4 TP 3 ES

Anchor point for trapezoidal sheet metal

DIN EN
795



Technical specifications	
Material	Stainless steel (V2A)
Pipe diameter	Ø 40 mm
Base plate	300 x 450 x 5 mm
Number of users	max. 2 persons
Trapeze profiles	200/375 - 200/420
Trapezoidal sheet thickness	min. 0,75 mm
Alignment	Warm roof / positive position
Drilling hole diameter	Ø 20 mm
Fastener (4 pcs.)	Tilting dowel

Version	Art. no.	Height	Roof structure
Primo 4 TP 3 ES/30	CH162401	300 mm	0 - 100 mm
Primo 4 TP 3 ES/40	CH162402	400 mm	0 - 200 mm
Primo 4 TP 3 ES/50	CH162403	500 mm	0 - 300 mm
Primo 4 TP 3 ES/60	CH162404	600 mm	0 - 400 mm
Primo 4 TP 3 ES/70	CH162405	700 mm	0 - 500 mm
Primo 4 TP 3 ES/80	CH162406	800 mm	100 - 600 mm