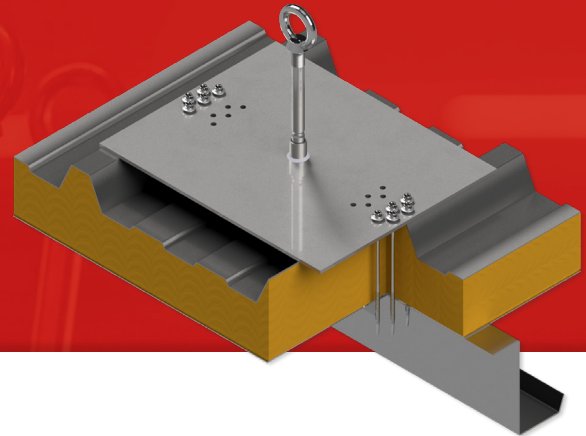


Primo 47 SP-ZP

Anchor point for sandwich panels

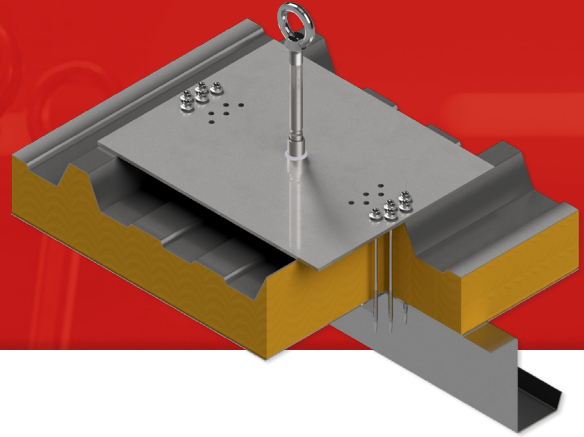


Technical specifications				
Material	stainless steel (V2A)	stainless steel (V2A)	stainless steel (V2A)	stainless steel (V2A)
Substructure	Z-purlins	Z-purlins	hollow sections	hollow sections
Substructure max.	max. 6 mm	max. 12 mm	max. 6 mm	max. 12 mm
Substructure min.	min. 2,5 mm	min. 2,5 mm	min. 2 mm	min. 2 mm
Pipe diameter	Ø 20 mm	Ø 20 mm	Ø 20 mm	Ø 20 mm
Base plate	300 x 375 x 5 mm	300 x 375 x 5 mm	300 x 375 x 5 mm	300 x 375 x 5 mm
Height	200 mm	200 mm	200 mm	200 mm
Number of users	max. 4 persons	max. 4 persons	max. 4 persons	max. 4 persons
Steel strength	min. S320GD	min. S320GD	min. S235	min. S235
Height of the steel profile	min. 100 mm	min. 100 mm	min. 140 mm	min. 140 mm
Width of the steel profile	min. 60 mm	min. 60 mm	min. 60 mm	min. 60 mm
Height pu-elements	60-195 mm	60-195 mm	60-195 mm	60-195 mm
Height mineral-elements	94-234 mm	94-234 mm	94-234 mm	94-234 mm
Self-drilling screws (10 pcs.)	JT-D-6H-5,5/6,3 x L	JT-D-12H-5,5/6,3 x L	JT-D-6H-5,5/6,3 x L	JT-D-12H-5,5/6,3 x L

Version	Art.-Nr.	Insulation core thickness	screw length
Primo 47 SP-ZP/120	ZP118120	25 - 120 mm	175 mm
Primo 47 SP-ZP/200	ZP118200	140 - 200 mm	267 mm

Primo 47 SP-ZP

Anchor point for sandwich panels



Reference chart for the required screw lengths:

Insulation core thickness (Sandwich) in mm	Total thickness (Sandwich) in mm	screw length in mm at a flange thickness up to 6 mm	screw length in mm at a flange thickness up to 12 mm
25	60	87	95
40	75	107	115
60	95	127	135
80	115	147	155
100	135	167	175
120	155	197	195
140	175	237	215
150	185	237	245
160	195	237	245
175	210	237	245
200	235	267	275