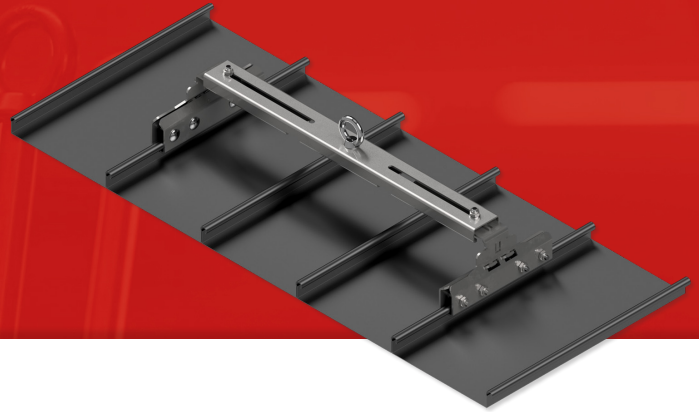


Primo Clamp

Anchor point for seamed roofs



DIN EN
795

Technical specifications	
Material	stainless steel (V2A)
Number of users	max. 4 persons
Seam profiles	Standing & round seam (KALZIP, BEMO, etc.)
Seam widths	320 - 640 mm
Substrate thickness	min. 0,7 mm
Edge distance	min. 700 mm
Fasteners (2 pcs.)	standing or round seam clamps

Version	Art.-Nr.	Application
Primo Clamp	500010	anchor point
Primo Clamp/C	500011	Lifeline system Typ C