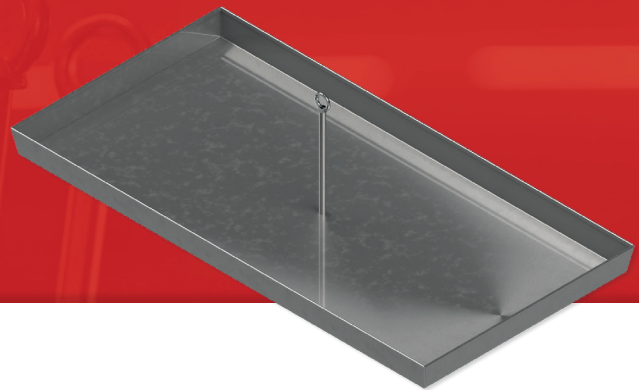


Primo 16 AG Z - K

Load-bearing anchor point



Technical specifications	
Material	Stainless steel (V2A)
Dimensions	1630 x 810 x 95 mm
Load-bearing	Gravel
Application	as an intermediate bracket in lifeline systems
Roof inclination	max. 5°
Gravel size	8 - 63 mm

Version	Art. no.
Primo 16 AG Z - K	568250