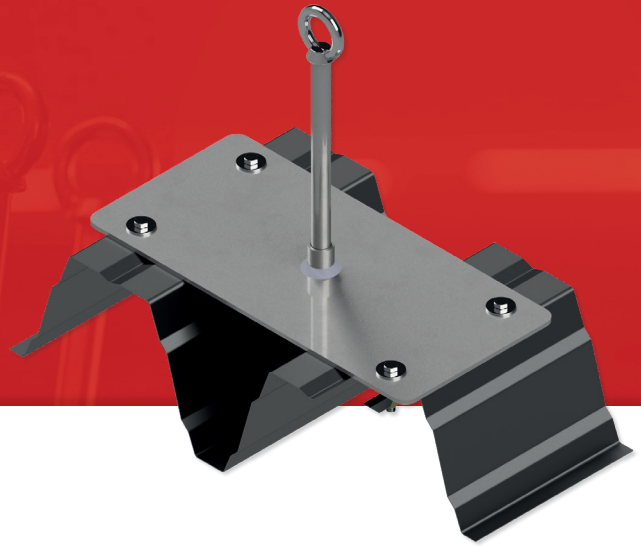


Primo 4 TP 3

Anchor point for trapezoidal sheet metal



| Technical specifications | |
|-----------------------------|-------------------------------|
| Material | Stainless steel (V2A) |
| Pipe diameter | Ø 20 mm |
| Base plate | 214 x 450 x 5 mm |
| Number of users | max. 2 persons |
| Trapeze profiles | 200/375 - 200/420 |
| Trapezoidal sheet thickness | min. 0,75 mm |
| Alignment | Warm roof / positive position |
| Drilling hole diameter | Ø 20 mm |
| Fastener (4 pcs.) | Tilting dowel |

| Version | Art. no. | Height | Roof structure |
|-----------------|----------|--------|----------------|
| Primo 4 TP 3/40 | 183400 | 400 mm | 0 - 200 mm |
| Primo 4 TP 3/50 | 183500 | 500 mm | 0 - 300 mm |
| Primo 4 TP 3/60 | 183600 | 600 mm | 0 - 400 mm |
| Primo 4 TP 3/70 | 183700 | 700 mm | 0 - 500 mm |