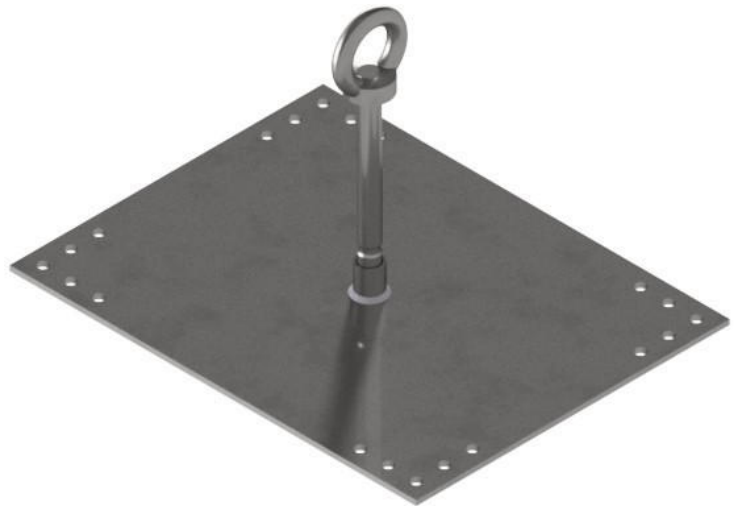




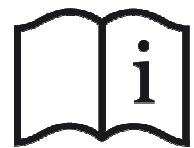
SICHERHEITSKONZEPTE BREUER

Instructions for use and installation

Primo 44 SP



Made in Germany



We keep you safe!

Chapter A – Product-specific details and installation instructions

General information

The instructions for use apply for the following products:

Primo 44 SP	Anchor device	Type A	EN795:2012 DIN CEN/TS 16415:2017
-------------	---------------	--------	-------------------------------------

The suitability of the PPE for fall arresting in conjunction with this anchor device must be clarified with the PPE manufacturer.

The maximum forces that the anchor device can absorb in practice in the structure are:

- 6 kN with one person
- 7 kN with two people
- 12 kN with use of a type C anchor device

Use as single anchor point

The anchor device can be used as a single anchor point.

A maximum of two people can be secured at the same time on the anchor device.

Use as system component

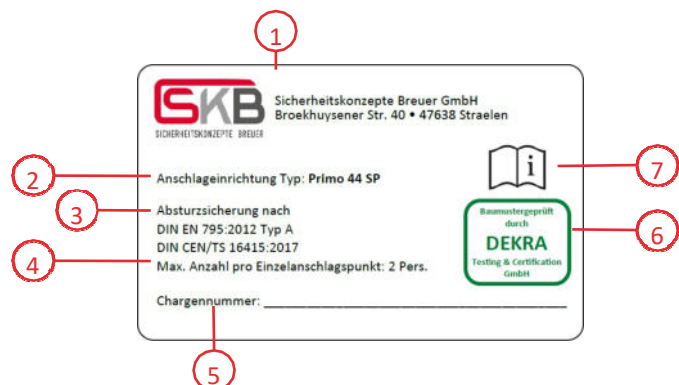
The anchor device can be used for fixing end connections, corner connections and intermediate connections in the BR 6, BR 8, BR 6 Temp and BR 8 Temp cable systems.

With use as a system component in a cable system, where required a curve element or an intermediate holder is then secured on the anchor device as an alternative to the ring eyelet. Please observe the cable system's installation instructions here.

Identification

- 1 Manufacturer
- 2 Product and type identification
- 3 Standard and classification
- 4 Number of users
- 5 Batch number
- 6 Type approval details
- 7 Notice that the instructions for use must be observed

Activated and notified body to perform the type approval test and monitoring
DEKRA Testing and Certification GmbH (0158)
Dinnendahlstr. 9
D-44809 Bochum



Before entering the fall-risk area:

The proper condition of the components of the personal fall protection equipment must be checked. They must also agree with those named in these instructions for use and on the control card. All system components must be checked for completeness and integrity.

All other personal fall protection equipment must be inspected before use for externally visible damage and completeness, in accordance with the accompanying instructions for use.

When entering the fall-risk area:

The user hooks the carabiner hook of their personal fall protection equipment directly into the eyelet of the anchor device.



Unlocked carabiner hooks can loosen unintentionally from the anchor point!

When using the anchor devices the required clearance below the user must be checked and secured beforehand. It must also be ensured that if a fall occurs, the free fall distance is limited to a minimum.

The required clearance depends on the harness system's components used (safety harness and lanyard), their maximum expansion and the shifting of the anchor point. The distance is also determined by the extension of the shock absorber used and the shifting of the safety harness on the body (look up in the PPE instructions for use), the size of the user and an additional metre of safety distance.

The permissible strain caused by building edges must also be observed. The required minimum distance is calculated from the following items:

- Shifting of the anchor point (length of anchor device)
- + lanyard including shock absorber according to EN 355 and EN 354 (observe accompanying instructions for use)
- + slippage of the safety harness on the body (observe accompanying instructions for use)
- + size of the user
- + 1 metre safety distance

Primo 44 SP installation instructions

Tools

The following tools are required for installing the anchor device:

- Cordless drill
- 7.8 mm drill bit
- Hand riveter with 6 mm insert

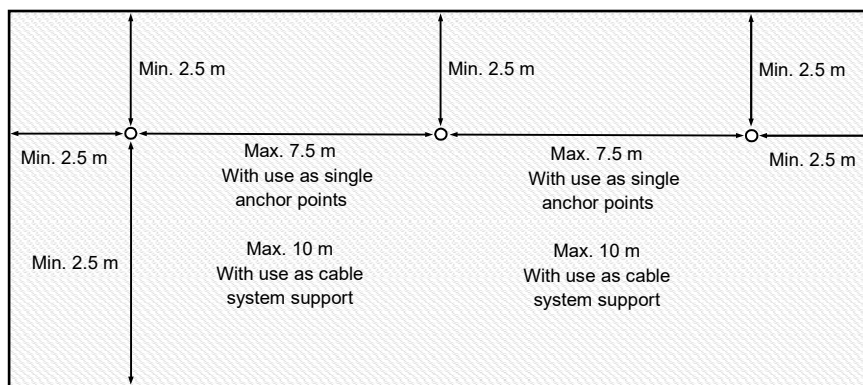
Installation notes

The Primo 44 SP anchor device is suitable for the following bases:

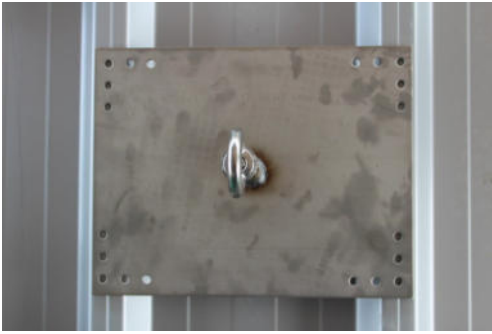
Sandwich panels

Installation bases must always be sufficiently solid.

The anchor device must generally be mounted at least 2.5 from the fall-risk edge. The spacing of the anchor devices must not exceed 10 m with cable systems. With single anchor points the spacing between the anchor devices should not exceed 7.5 m.



Installation



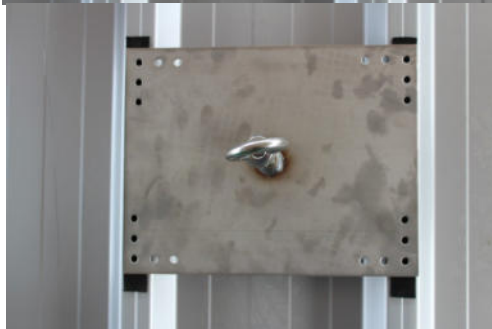
Place the anchor device at the point you want it on the sandwich panel.



Stick the seal provided in the anchor device area on the raised bead of the sandwich panel.



Stick the second seal provided in the anchor device area on the adjacent raised bead of the sandwich panel.

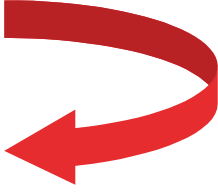
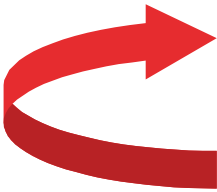


Place the anchor device on the sandwich panel again. Drill (\varnothing 7.8 mm) through the seal and through the cap plate of the sandwich panel in the 3 aligned holes in each corner of the anchor device.



Fix the anchor device on the sandwich panel with the 12 rivets provided in the assembly kit.

Always use highly stable screw lock (e.g. Loctite) to secure the ring nut. Set the ring eyelet on and screw in clockwise.



Tighten the ring eyelet.

Installation log

Master data

Building project	Installation company
Section	Installer
	Installation date

Product	Production year
Version	Serial no.
Amount installed	

Installation inspection

Primo 44 SP

Maximum 2 people

- Manufacturer details complied with
- Installation instructions read and observed
- Anchor device positioning in accordance with installation instructions
- Both seals inserted according to the installation instructions
- The drill holes are 7.8 mm in diameter
- Drill hole through the seal and through the sandwich panel's cap plate
- All rivets inserted with hand riveter
- Rivets provided used
- Type label present and legible
- Type approval observed

Drawings & photo documentation

Chapter B – General safety regulations

General information

The safety instructions formulated in this brochure **MUST** be read before installing and using anchor devices. Important: all details must be clearly understood, and all specifications must be complied with.

If the products are to be sold abroad, the dealer shall be responsible for the inclusion with delivery of the entire manufacturer documentation in the respective national language.

None of our products may be either adjusted or added to without explicit written approval by Sicherheitskonzepte Breuer GmbH, as this would endanger their proper function and therefore the user's safety.

The anchor devices must be withdrawn from use immediately if there is any doubt about safe use or the product has been stressed by a fall.

The anchor devices are not personalised for the user.

Temporary anchor devices must not be kept permanently on the building.

It is obligatory that sufficient free space below the user is ensured, so that if they do fall they will not hit the ground or another obstruction. It must also be ensured that the fall distance is limited to a minimum. Wherever possible, work should therefore never be performed above the anchor point.

The maximum force that the anchor devices can absorb in the structure is 12 kN.

The anchor devices are suitable for all directions horizontal to the roof surface.

Fall protection anchor devices that have arrested a fall are generally still suitable as fixing points for cable-supported rescue access. The maximum permissible number of people, however, must always be observed.

It must be ensured that the work to be performed will not injure any other people, e.g. by falling tools. The surface below the work area must be kept clear. Legal requirements such as accident prevention regulations must be complied with.

Inspection before use

Before every use, the user must inspect the equipment to ensure that it functions correctly and is ready for its intended use.

The following criteria must be checked before use:

- No sign of corrosion
- No loose connections or connector pieces
- No bending or deformations
- No visual defects
- Complete and correct identification
- No cracks
- No wear and tear
- Solid connection with installation base
- Set time for annual inspection has passed by yet

Use

All anchor devices are used exclusively for safeguarding people from falling from a height. The anchor devices must not be used for purposes they are not intended for (e.g. for transporting materials or as a lifting device). The specified usage conditions must also be complied with.

The anchor devices may only be used by trained people who are instructed in their safe use and who have the corresponding knowledge.

Some health conditions (e.g. cardiovascular problems, medication use) can impair the user's safety in both normal and emergency use. If in any way uncertain about the user's health condition, please consult a doctor. Children and pregnant women may not use the anchor devices.

The anchor devices may only be used as part of a fall arrester system when the user is equipped with a device that limits the arrest forces to 6 kN. Only safety harnesses in accordance with EN 361:2002 may be used.

Before use begins, a plan with rescue measures, which considers all possible emergencies with the pending work, must be provided as well.

The suitability of the PPE for fall arresting in conjunction with these anchor devices must be clarified with the PPE manufacturer.

Installation

The installation instructions included must always be observed with all products.

The installation must only be performed with the installation material provided by Sicherheitskonzepte Breuer GmbH.

The installation bases must be suitable for the respective anchor devices. The suitability of the base must be checked before the installation. You'll find the requirements for the suitability of the base in the corresponding installation instructions.

If uncertain or in doubt about the suitability of the installation base, the anchor devices must not be installed or used and a stress analyst must be consulted.

If individual products are combined into one system, the instructions for installation and use of all components must be observed. It must in particular be ensured that the individual elements of the system are compatible with one another. If uncertain the manufacturer must be contacted.

Please note that the user's safety and the proper functioning of the entire system are endangered if a safety function of one of the system's elements or components is impaired.

The respective accident prevention regulations must be complied with during the installation and use of the anchor devices.

With the installation it must be ensured that the product identification is legible. If the product identification is no longer accessible after installation, another identification must be attached close to the anchor device.

The stainless steel must not come in contact with swarf (grinding dust) or steel tools, as this could cause surface corrosion.

The anchor devices should be installed so that a fall over the fall-risk edge is not possible when the personal protection equipment is used correctly.

An installation log must be kept and the installation documentation must be kept for viewing. The installation log printed in this brochure or alternatively the Breuer Doku app can be used for this.

Transport and storage

Transport and storage must only be in the Sicherheitskonzepte Breuer GmbH original packaging. Storage must be in a dry and weather-protected place. Transport and storage must not cause any damage on the products.

Regular inspection

The anchor devices must undergo a regular inspection by an expert trained and certified by Sicherheitskonzepte Breuer GmbH. The inspection must observe Sicherheitskonzepte Breuer GmbH's instructions precisely and accurately.

The regular inspection is directly relevant for the user's safety.

The regular inspection must be performed while considering legal regulations, the type of equipment, the frequency of use and the respective environmental conditions. However, the interval between two inspections may never exceed 12 months. The legibility of the product identification must be checked in the course of the inspection.

The regular inspection must be documented by the expert. The inspection documentation printed in this brochure can be used or equivalent documentation can be created for this.

The date of the last inspection should be noted on the anchor devices.

Maintenance and servicing

All repairs must only be performed by trained staff according to the manufacturer's specifications. If uncertain or in doubt the manufacturer must be contacted.

The anchor devices are not subject to any special maintenance requirements.

The metal parts can be cleaned when dirty by simply wiping off after use. Other forms of cleaning (chemical cleaning etc.) are not permitted.



SICHERHEITSKONZEPTE BREUER

Broekhuysener Straße 40
D-47638 Straelen
Tel.: +49 (0) 2834 94 30 100
Fax: +49 (0) 2834 94 30 562
info@sicherheitskonzepte-breuer.com
www.sicherheitskonzepte-breuer.com
© Sicherheitskonzepte Breuer GmbH